

VC-A50PN IP PTZ Camera with NDI®

Lumens®

The Lumens® VC-A50PN HD Pan/Tilt/Zoom (PTZ) IP camera is equipped with a professional 1/2.8 inch image sensor with Full HD 1080p output at 60 fps. It's powered by Power over Ethernet (PoE+), an economical and easy integration solution. The superior 20x optical zoom lens, excellent white balance, and exposure mode delivers a clear image, even in low light or the extreme contrast of brightness and darkness in a lecture hall.

The VC-A50PN has Ethernet, HDMI, and 3G-SDI outputs that are simultaneously active. It supports live broadcasting with H.264 format with latency of less than 120ms. The camera covers wide shooting angles and achieves high-speed, quiet, and precise positioning with smooth PTZ operations.

The VC-A50PN is an applicable solution for lecture recording, videoconferencing, and live broadcasting applications.

Key Features

- Full HD 1080p signal output format with a high frame rate of 60 fps
- 20x optical zoom
- Supports live broadcasting
- Supports Power Over Ethernet (PoE+)
- Supports NDI® technology for NDI-based video production
- Ethernet low latency (< 120 ms)
- Ethernet, HDMI, and 3G-SDI synchronous image outputs
- Maximum horizontal/vertical speed of rotation:120 degrees/second



More Details

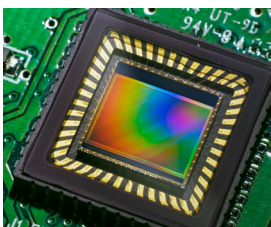


Image Quality

The VC-A50PN is equipped with a professional 1/2.8 inch image sensor with Full HD 1080p output resolution. The sensor provides high color reproduction, high-definition signals, and crystal-clear image quality.



Ethernet Interface

The VC-A50PN supports H.264 video compression format that can reduce the bandwidth for transmitting video. This technology can decrease hard disk space when recording.

Easy Installation

Powered by PoE+ (Power over Ethernet) allowing a cost-effective and simple installation.



Supports NDI® Technology

The VC-A50PN can connect directly to a NDI® network, utilizing NDI-based video production workflows without additional configuration, reducing cost and set-up time.



Wide Range Pan/Tilt/Zoom Action

The VC-A50PN has a wide shooting area (pan angle from -170° to +170° ; tilt angle from -30° to +90°), as well as quiet, fast, and precise positioning movements.



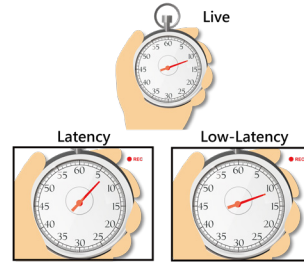
Multiple Signal Interface Formats

The VC-A50PN is able to switch video output formats to Full HD for compatibility in various display devices.



Audio Input Support

Transmission through the Internet, SDI and HDMI extending the distance of an audio device. This enhances sound quality while reducing installation cost.



Ethernet Low-Latency

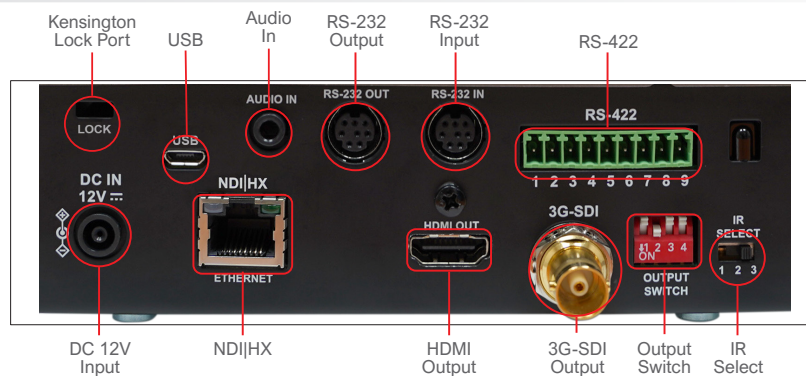
The VC-A50PN supports low-latency and the fast response time is less than 120 ms that allows unnoticeable delays between a live image and its output on the screen.

Product Specifications

Sensor	1/2.8" 2.41MP CMOS
Video Format	1080p : 60 / 59.94 / 50 / 30 / 29.97 / 25 1080i : 60 / 59.94 / 50 720p : 60 / 59.94 / 50
Video Output (HD) Interface	3G-SDI / HDMI / Ethernet
Optical Zoom	20x
Horizontal Viewing Angle	57°
Vertical Viewing Angle	32.1°
Diagonal Viewing Angle	65.4°
Panning Angle	+170° ~ -170°
Panning Speed	120° / sec
Tilting Angle	+90° ~ -30°
Tilting Speed	120° / sec
Aperture	F1.6 ~ F3.8
Focal Length	5.33mm ~ 110mm
Shutter Speed	1/1 ~ 1 / 10,000 sec
Minimum Object Distance	1.5m (Wide / Tele)
Video S/N Ratio	> 50dB
Minimum Illumination	1.0 lux (F1.6, 50IRE, 30fps)
Focus System	Auto / Manual
Gain Control	Auto / Manual
White Balance	Auto / Manual
Exposure Control	Auto / Manual

WDR	Yes
3D NR	Yes
Image Flip	Yes
Preset Positions	128
Multiple Video Stream	Two Streaming Structure NDI 1080p 60fps + 640 x 360 30fps
Control Interface	RS-232 / RS-422 / Ethernet
Control Protocol	VISCA / PELCO D / NDI
Tally Light	Yes
PoE	PoE+ (IEEE802.3at)
Video Stream	NDI HX
Video Compression	H.264
Audio Input	Line In / MIC In (Phone Jack 3.5mm x1)
Audio Output	Ethernet / SDI / HDMI
IR Pass-through	Yes
IR Receiver	Yes
IR Remote Control	Yes
Power Consumption	PoE : 17.5W DC In : 16W
Weight	4.4lbs (2 kg)
Dimensions	6.9" x 7.3" x 7.3" (174 x 186 x 187 mm)

I/O CONNECTIONS



Lumens®

Lumens Integration, Inc.
4116 Clipper Court
Fremont, CA, 94538
Phone: +1-866-600-0988
Fax: +1-510-252-1389

Lumens Europe
De Nayerstraat 17 9470
Denderleeuw Belgium
Phone : +32-473-58-38-95
Fax : +32-2-452-76-00



www.MyLumens.com